

**NOTES:**

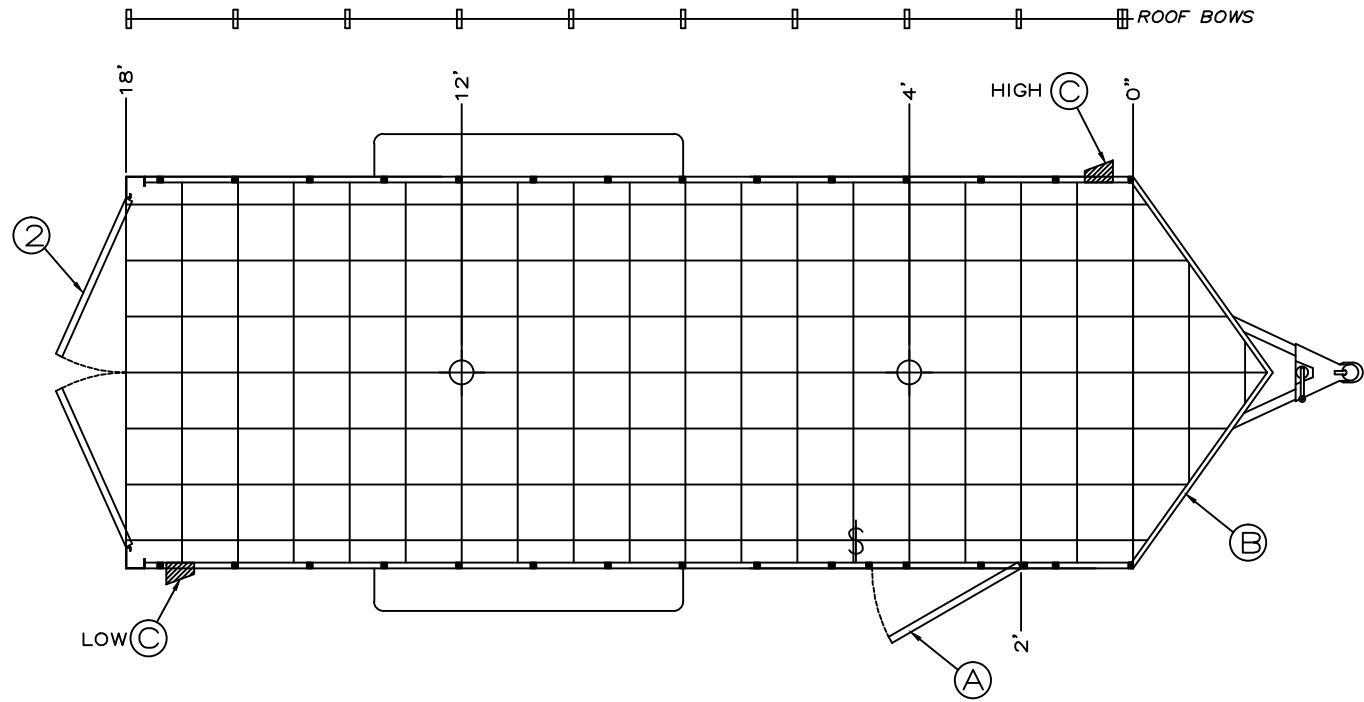
(MATCH WITH NUMBER IN CALL-OUT ON PRINT)

NBR: TEXT:

- 1 .030 ALUM. EXTERIOR W/CAP
- 2 DOUBLE REAR DOORS

- A 1-32" SIDE DOOR
- B 24" ATP STONEGUARD
- C 2-FLOW THRU SIDEWALL VENTS

DATE: 2/1/11 MODEL: ST718TA2 ORDER NUMBER: 000000 DEALER: BRAVO STOCK PG: 1 OF 1



**KEY:**

- 12v STANDARD DOME LIGHT
- 12v ICON STYLE DOME LIGHT
- 12v WALL SWITCH
- 12v WALL MOUNT LOADING LIGHT

- DOUBLE TUBE FLUORESCENT
- SINGLE TUBE FLUORESCENT
- 110v WALL SWITCH
- 110v WALL RECEPT
- 110v GFI RECEPT
- QUARTZ LIGHT

- ROOF VENT (LABEL AS FOLLOWS)  
N/P = NON POWERED  
12v = 12 VOLT POWERED  
110v = 110 VOLT POWERED  
W/F = WIRE & FRAME FOR AIR  
A/C = AIR CONDITIONER
- PANEL W/ LIFELINE & CABLE HATCH (LABEL W/AMPERAGE)
- MOTOR BASE PLUG (LABEL W/AMPERAGE)

- D-RING (FLOOR & WALL)
- E-TRACK (FROM ARROW.. TO ARROW)
- ATP

APPROVED: \_\_\_\_\_



19319 COUNTY ROAD 8, BRISTOL IN 46507  
PHONE: 574.848.7500 - FAX: 574.848.7550