

MATCH LETTER OR NUMBER WITH PRINT

DATE: 10/28/2019

MODEL: SSA8528TA3

ORDER NUMBER: 000000

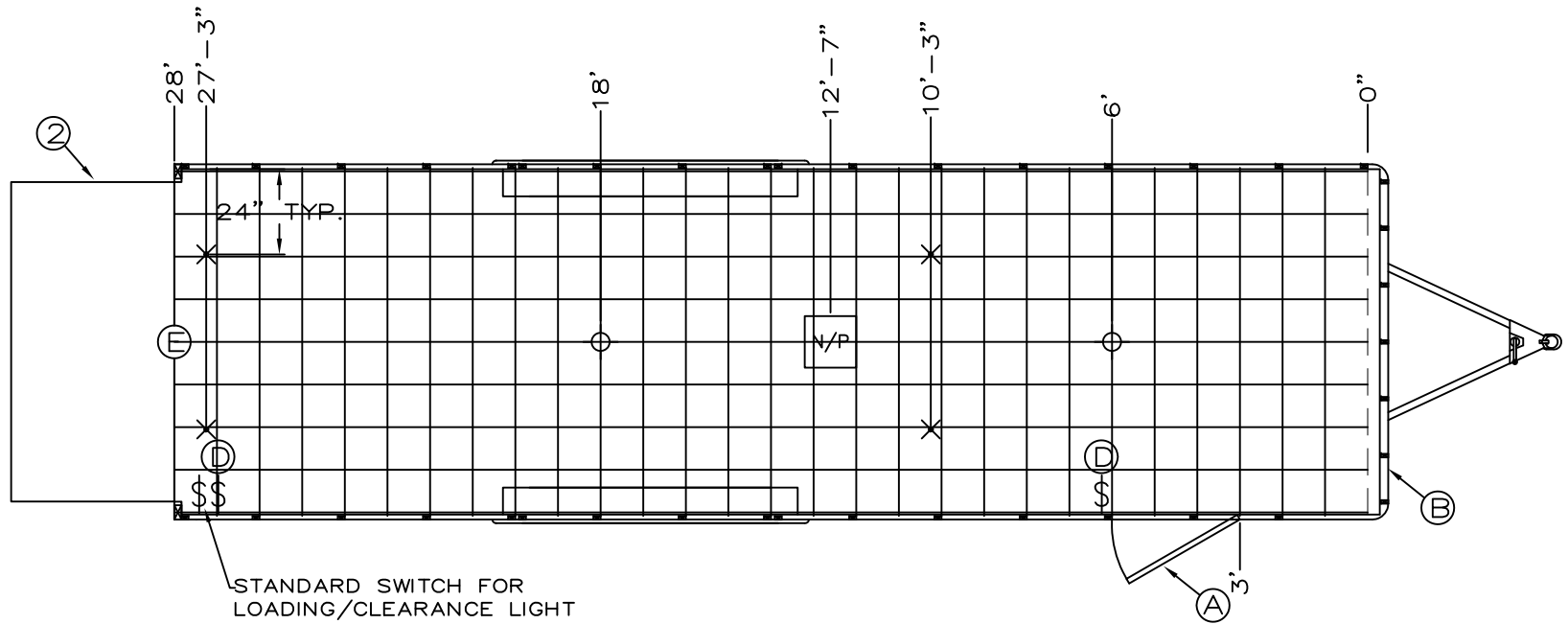
DEALER: BRAVO STOCK PG: 1 OF 1

- 1 VHB .030 ALUMINUM EXTERIOR
- 2 HEAVY DUTY ALUMINUM RAMP DOOR WITH FLAP
NO TRIM ON FLAP
NO SPRING COVER

- A 1-36" SIDE DOOR
- B 24" ATP STONEGUARD
- C 4-5000# RECESSED FLOOR D-RINGS
- D 2-3WAY 12v. WALL SWITCHES
- E 1-EXTERIOR LED REAR HEADER LOADING LIGHT

BEAVERTAIL
 MINI SPREAD AXLE
 STAINLESS FRONT CORNERS & INSERT
 BALL BURNISHED FRONT & REAR CASTINGS

**** 7' INTERIOR HEIGHT ****



KEY: :

12 VOLT ELECTRICAL	110 VOLT ELECTRICAL	ROOF VENTS	OTHER	APPROVED: _____	
<ul style="list-style-type: none"> - STANDARD LED DOME LIGHT - 4" ROUND LED DOME LIGHT - WALL SWITCH 	<ul style="list-style-type: none"> - PANEL W/ LIFELINE & CABLE HATCH - MOTOR BASE PLUG - 2 BULB FLUORESCENT - 1 BULB FLUORESCENT 	<ul style="list-style-type: none"> - QUARTZ LIGHT - WALL SWITCH - 15 AMP RECEPT - 20 AMP RECEPT - GFI RECEPT 	<ul style="list-style-type: none"> - N/P N/P = NON POWERED 12v = 12 VOLT POWERED 110v = 110 VOLT POWERED A/C = AIR CONDITIONER W/F = WIRE & FRAME 	<ul style="list-style-type: none"> - D RING - E TRACK - ATP - TIRE COMPARTMENT 	 19319 COUNTY ROAD 8, BRISTOL IN 46507 PHONE: 574.848.7500 - FAX: 574.848.7550 DRAWN BY: _____